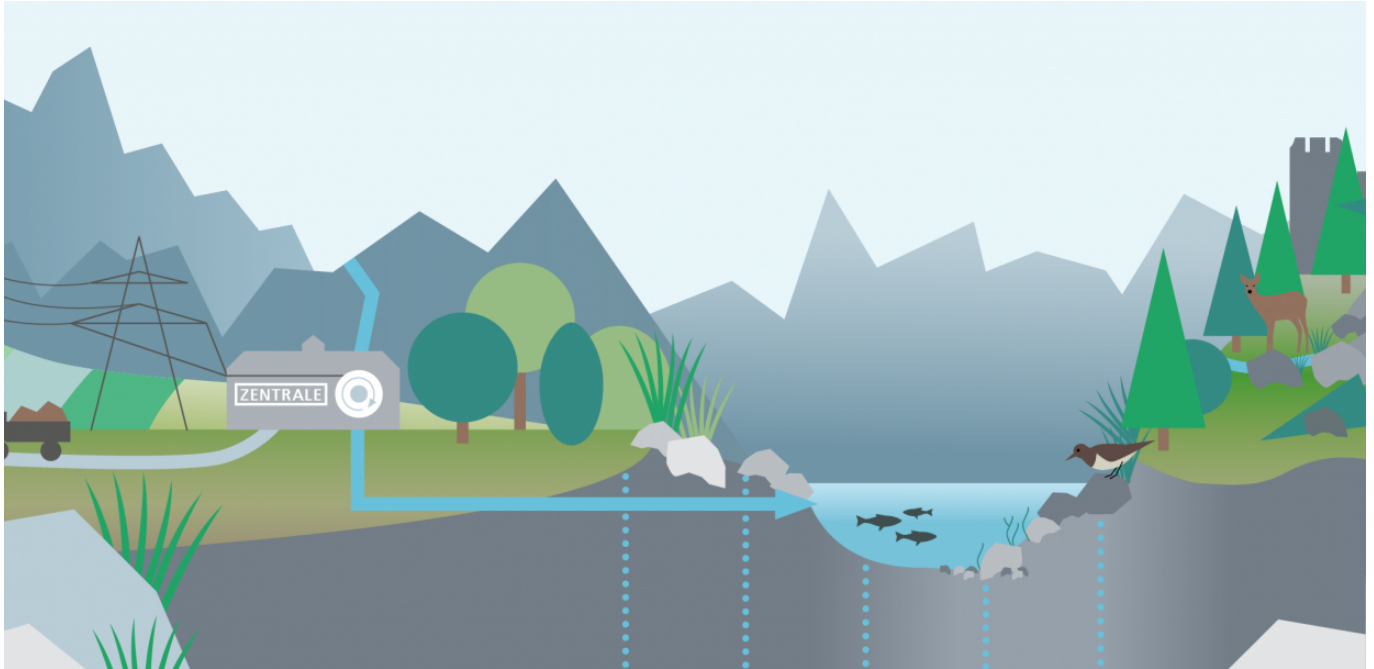


# Animated Information Graphic as a Supplement to the Environmental Impact Report on the Chlus Hydropower Station



**Making ample use of information graphics, the communication specialists at EBP are preparing a targeted presentation of comprehensive environmental assessments for showing to relevant interest groups in public.**

Experts from our Environment + Water division are drafting the environmental impact report on the first phase of the planned Chlus Hydropower Station. This work includes a comprehensive examination of all relevant environmental aspects to ensure that the planning of the project is carried out as carefully and with as little environmental impact as possible. Our findings are to be presented to the public in the run-up to the voting on water concession agreements.

The communication team at EBP is putting together a PowerPoint presentation aimed at the target group in question. Working in consultation with the relevant specialists, the team will first set out the complex and extensive issues involved. Texts will be condensed and edited to optimise the presentation, and wherever possible the information will be conveyed by clear graphics. The text and information graphics will be animated to help ensure that the presentation flows well and to illustrate the content in a lively way.

## Client

Repower AG

## Facts

Period 2014

Project Country Switzerland

## Contact persons

Miriam Werder  
[miriam.werder@ebp.ch](mailto:miriam.werder@ebp.ch)

Noa Spörri  
[noa.spoerri@ebp.ch](mailto:noa.spoerri@ebp.ch)