

# Spatial development strategy for the district of Fürstenfeldbruck



**The Spatial Development Strategy (SDS) was drafted to give the participating municipalities a common strategy for their future spatial development. Support for the project was provided by various planning and development firms, with EBP assuming responsibility for transportation.**

The district of Fürstenfeldbruck is located west of Munich. While the eastern parts of the district border the city of Munich directly and have an extensively urban character, the district's western parts have a pronounced rural character. Despite their different spatial requirements, the various municipalities were nonetheless able to work together with the Fürstenfeldbruck District Administration and reach an agreement on a common SDS. The considerations in the common strategy boost the communities' awareness of their individual strengths and potential while at the same time reinforcing the cohesiveness of the district. The scope of the SDS includes a full range of development factors, including landscape, settlement, transportation and economic development.

## **SDS offers broad-based planning guideline**

Municipality and district representatives actively participated in the drafting of the development strategy. Moreover, various events designed to encourage public participation were organized.

The SDS builds on a differentiated analysis of both the existing infrastructure throughout the regions and the special qualities of the various local communities. Using this analysis as a basis, the municipalities and the district worked together with the

## Client

District of Fürstenfeldbruck

## Facts

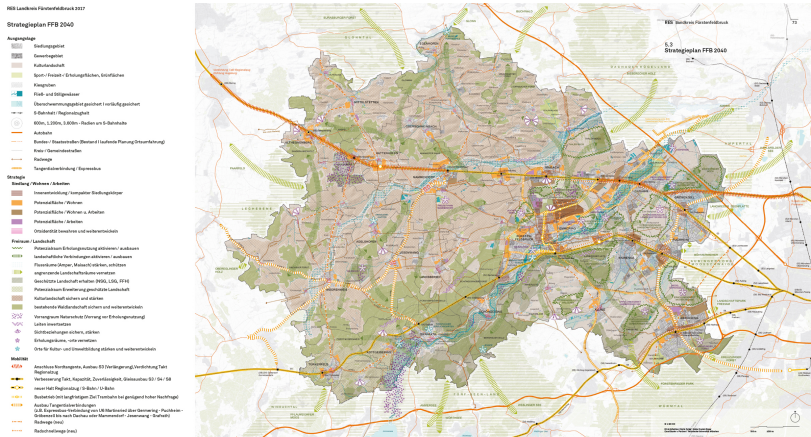
Period	2015 - 2017
Project Country	Germany
Participating municipalities	15+
District of Fürstenfeldbruck population	213,000
Participating planning and development firms	5

## Contact persons

Fabienne Perret  
[fabienne.perret@ebp.ch](mailto:fabienne.perret@ebp.ch)

planning firms to develop four possible visions for the future, namely "Protect", "Design", "Connect" and "Proceed". Basing on the two preferred visions "Design" and "Connect" a total of seven spatial development strategies were defined,. These strategies serve as a guideline for both municipality and district planning.

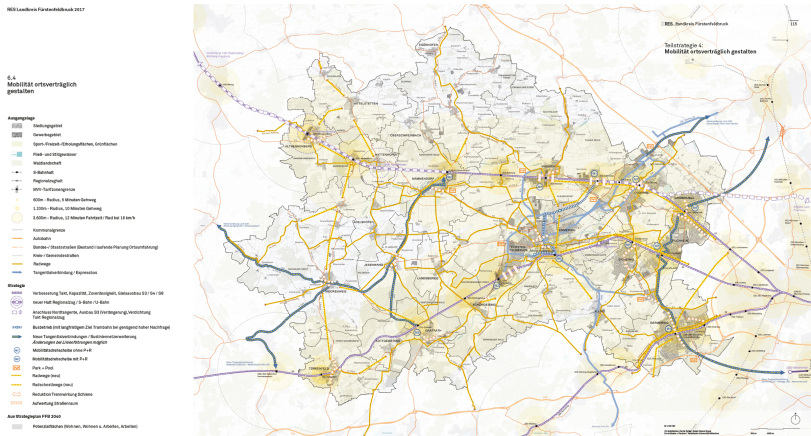
Benjamin Stadler  
benjamin.stadler@ebp.ch



Strategy map for Fürstentfeldbruck 2040

Transportation

"Designing low-impact transportation systems" reflects a widely accepted development strategies. One of the strategy's aims is to increase the attractiveness of public transportation via an enhanced alignment of settlement and transportation development. To achieve this, EBP examined the viability of introducing new public transportation services to connect regional hubs and increasing the scheduling frequency for existing services. We also worked out various options for making town centers more attractive and allocating more space for pedestrian and bicycle traffic. Bicycle express routes and other options were conceived for the urban eastern part of the district near Munich to improve transportation efficiency and promote environmental sustainability. Plans for more efficiently linking motorists in the rural west of the district to public transportation hubs were worked out to provide an alternative to full-distance commuting to work locations in Munich.



Strategy map for Fürstentfeldbruck 2040 - Designing low-impact transportation systems

Basis for well-coordinated development

The SDS offers the district and the individual municipalities a

common vision to serve as a guideline for their planning efforts.

The SDS includes no binding development or zoning specifications. Its purpose is to enable the municipalities and the district to develop in a well-harmonized and environmentally sustainable manner.

Map drafted by the Munich-based O3 Architekten GmbH