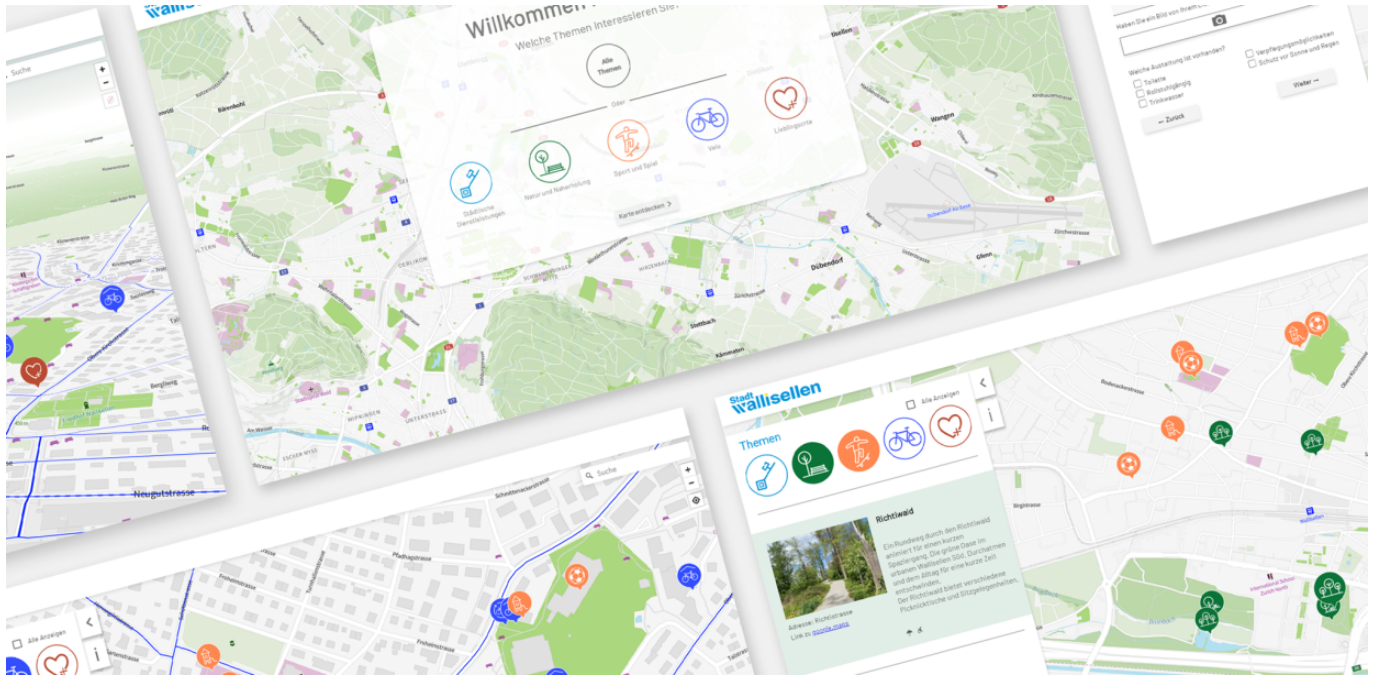


# Interactive City Map for Wallisellen



**We worked in close collaboration with town officials to develop an interactive map for residents and visitors of Wallisellen. The map enables a convenient and enjoyable way to discover what the municipality has to offer. Its “favorite places” feature provides personal insights into the town’s popular and lesser-known attractions. Indeed, all users are encouraged to shape the map by entering their own special locations.**

## Our services

- Iterative development of the content and the design concept in close collaboration with the town of Wallisellen
- Creating the visual design of the user interface
- Creating a custom design of the map
- Technical implementation of the map web application with Angular, Mapbox, and an admin panel for the release and maintenance of the favorite places
- Operating, supporting and maintaining the web application

## Client

City of Wallisellen

## Facts

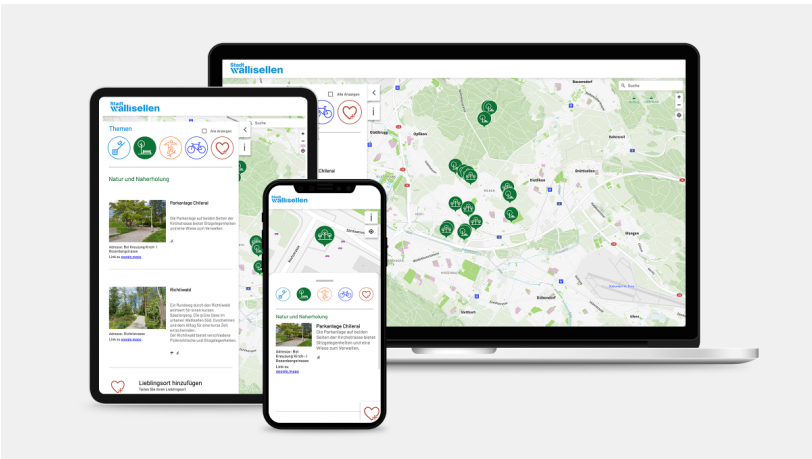
Period 2022 - 2023

Project Country Switzerland

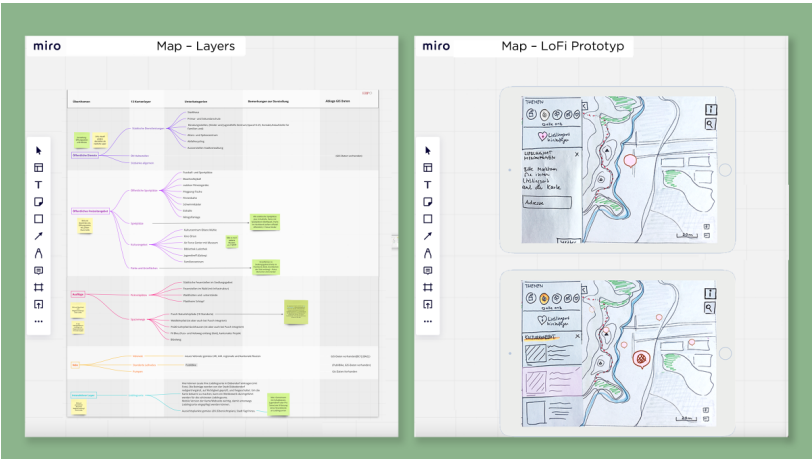
## Contact persons

Andrea Bianchin  
[andrea.bianchin@ebp.ch](mailto:andrea.bianchin@ebp.ch)

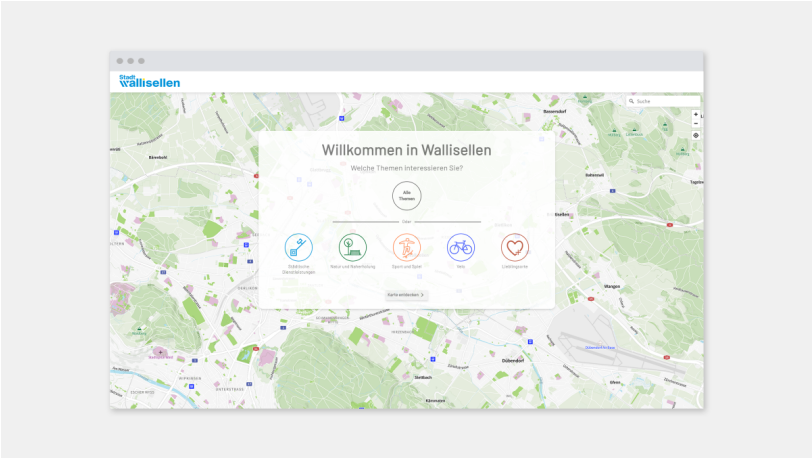
Natalie Hennig  
[natalie.hennig@ebp.ch](mailto:natalie.hennig@ebp.ch)



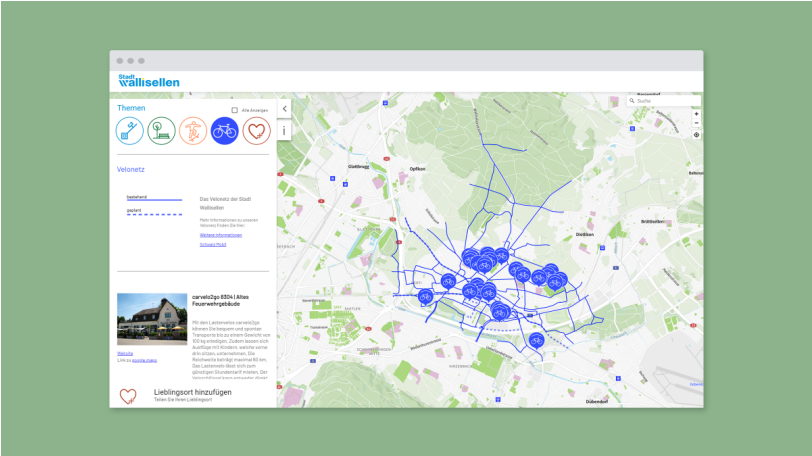
User-friendly on all end devices



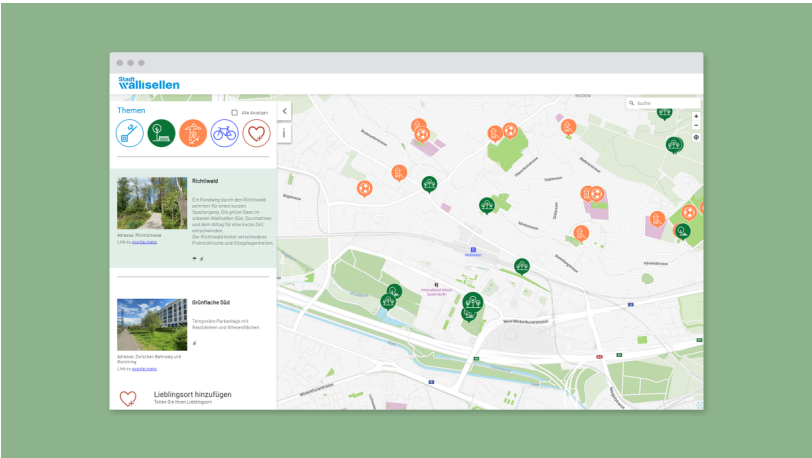
Iterative, user-centered development in close consultation with the municipality of Wallisellen – from the information architecture to initial sketches (low-fidelity prototype) and the final map



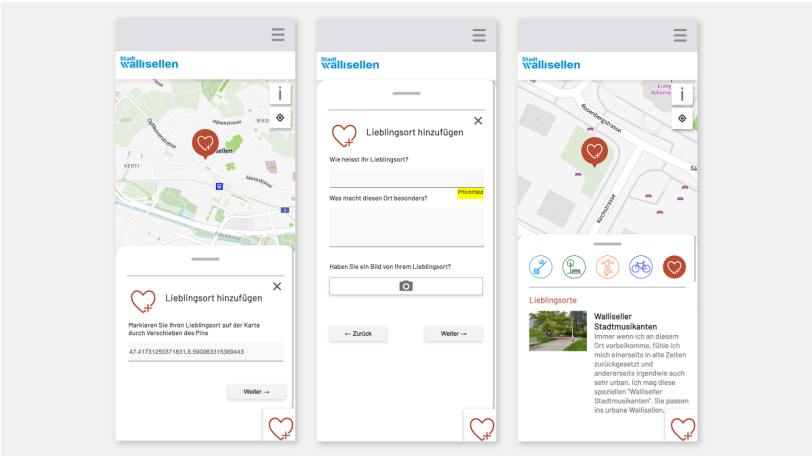
Map access



View of bicycle network



The map makes the municipality's wide array of recreational opportunities accessible and invites people to discover them



All users are invited to enter their favorite places on the map. Entries are reviewed by the municipality prior to publication.