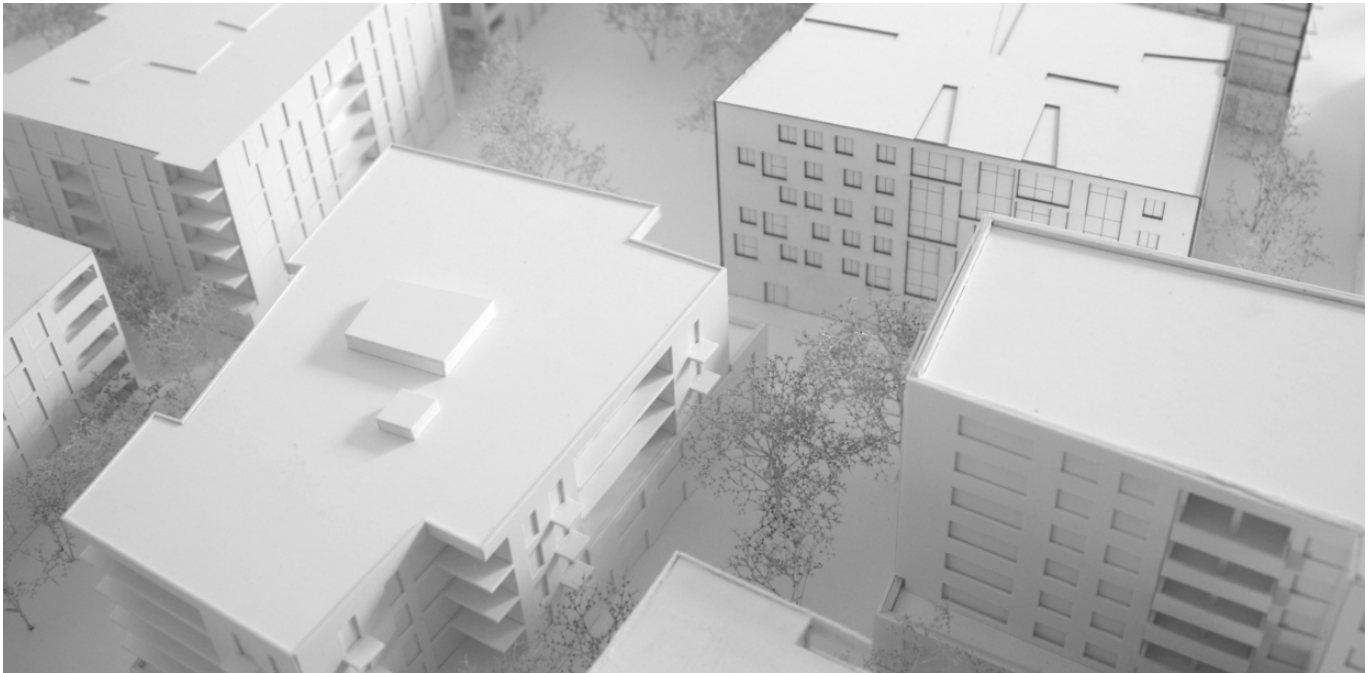


Mehr als Wohnen (more than living)



The cooperative building association Mehr als Wohnen (more than living) is developing a new urban district in the Hunziker area of Zurich according to the principles of sustainable building. EBP is planning the loadbearing structures of 6 buildings, including a timber building and a house made of insulating concrete.

The cooperative building association Mehr als Wohnen (more than living) is developing a new urban district in the Hunziker area of Zurich North by the end of 2013. Various infrastructures should improve the living and working conditions of around 1,000 people in this district.

The project is in line with the aims of the 2000-Watt Society. Even the planning process is bringing to light new methods and is thus an innovation laboratory for cooperative residential development. EBP were instructed to plan the loadbearing structures of six large residential buildings. Two of the six residential buildings are planned as pioneering projects and are blazing new trails in terms of materials and design. Major challenges of this project include a 5-storey timber building and a building of insulating concrete.

The ambitious modern architecture and the considerations of sustainable building are the central issues facing the structural engineers in designing the loadbearing structure.

Client

Mehr als Wohnen (more than living)
cooperative building association

Facts

Period	2010 - 2013
Project Country	Switzerland
