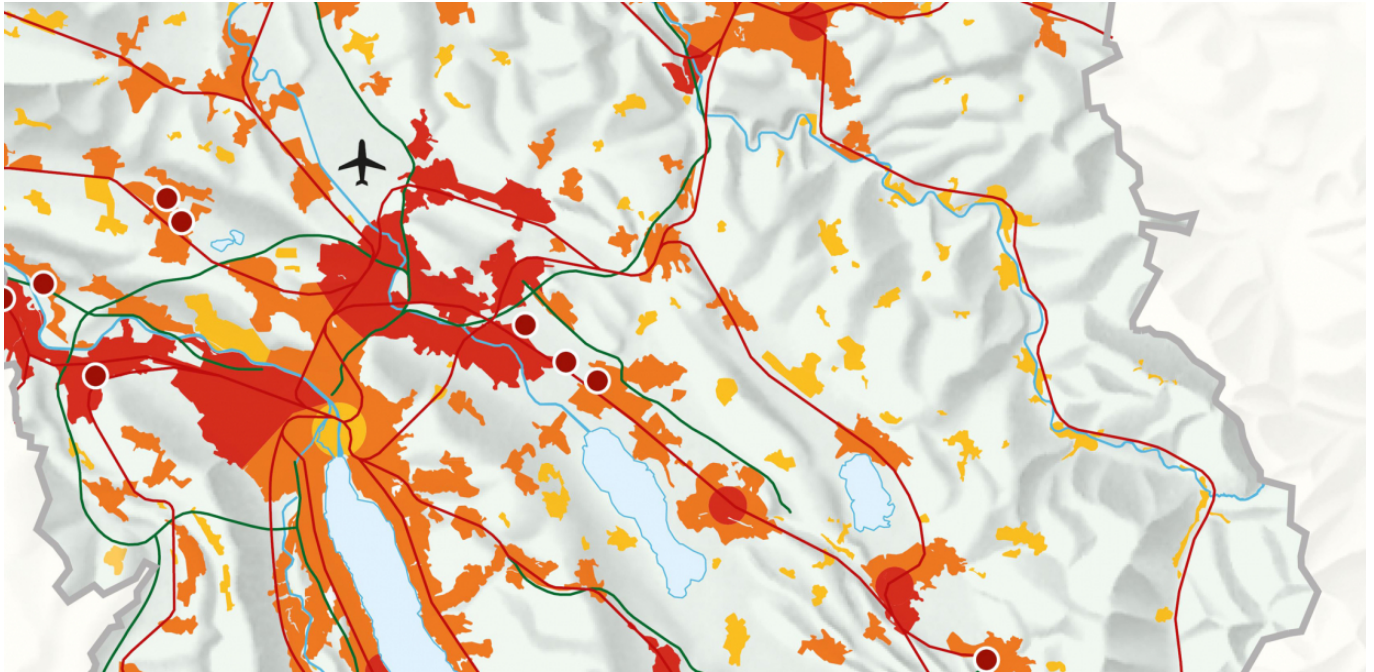


# Long-Term Spatial Development Strategy for the Canton of Zürich



**With the help of EBP, the Government Council of the Canton of Zürich has drafted a long-term development strategy that is to enable it to meet future development challenges.**

«How can we use population and economic growth to secure and enhance the established attractiveness of the Canton of Zürich as a place to live and do business?» This question has taken on special relevance in the wake of continued population and economic growth in the Canton of Zürich. In light of the importance of securing coordinated development, the Zürich Government Council has drafted a long-term spatial development strategy that deals with the question.

Akin to a compass, the strategy points out the direction in which the canton will have to go to ensure that future generations will continue to be able to profit from the canton's qualities, diversity and unique features. The strategy offers the Zürich Government Council a means of aligning the development activities of the various offices of the cantonal administration to common goals. Seven topic-specific strategies show how the future challenges facing the Canton of Zürich can be met. Topic-specific studies provide a means of taking a closer look at special challenges, for instance, in the areas of agriculture, logistics and transport.

EBP managed the drafting of the long-term development strategy. This work included helping to develop the strategy's content and to finalise its formulation. Beyond this, we also conceived and managed the cross-agency development process and the drafting of various topic-specific studies.

## Client

Canton of Zürich (Building Department)

## Facts

Period 2012 - 2015

Project Country Switzerland

## Contact persons

Lukas Beck  
[lukas.beck@ebp.ch](mailto:lukas.beck@ebp.ch)

Dr. Christof Abegg  
[christof.abegg@ebp.ch](mailto:christof.abegg@ebp.ch)