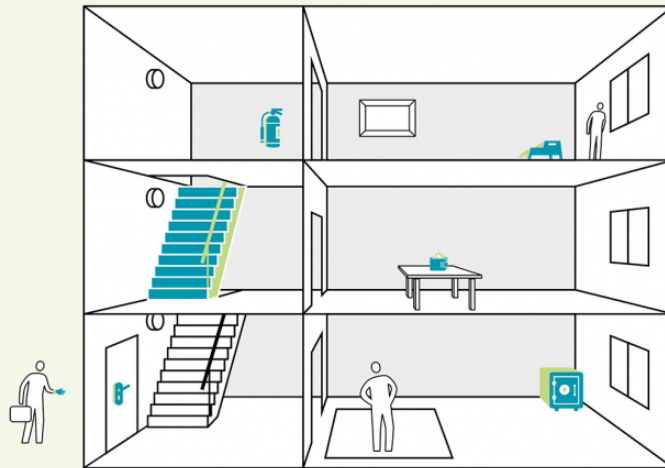


A guideline for providing housing assistance to low-income households



Low-income households often face difficulties when it comes to finding housing. Working in cooperation with ETH Zurich in the framework of the Swiss National Program for the Prevention and Eradication of Poverty, EBP has drafted a guideline to help cantons, cities and municipalities identify and implement effective approaches to providing support.

It is often difficult for low-income individuals and families to find affordable long-term housing, especially in high-rent districts where jobs may be available. Many families also wind up being forced to make sacrifices in other areas of life to pay the disproportionately high costs of housing.

The purpose of housing assistance programs is to enable economically disadvantaged individuals and families to find appropriate housing and to therefore gain a better opportunity to participate in civic life. Housing solutions of this sort also have the advantage of lowering dependence on welfare assistance and the associated costs of public funding.

The aim of the guideline drafted by EBP in the framework of the Swiss National Program for the Prevention and Eradication of Poverty is to encourage and help cantons, cities and municipalities to create appropriate housing assistance programs for low-income households or to improve upon their existing programs.

Client

Swiss Federal Social Insurance Office and
the Swiss Federal Housing Office

Facts

Period 2016 - 2018

Project Country Switzerland

Contact persons

Lukas Beck
lukas.beck@ebp.ch

Sarah Fuchs
sarah.fuchs@ebp.ch



Under the categories of Consultation and Support, Direct Housing Provision and Financial Support, the guideline illustrates seven housing assistance initiatives and offers specific instructions relating to their implementation, as well as those factors that are crucial for their success. The guideline also provides examples of successful initiatives drawn from five cities and municipalities. The guideline was published in January 2018 and is also available as a brochure in digital form.

EBP developed the guideline together with the ETH Housing Forum (www.wohnforum.arch.ethz.ch).