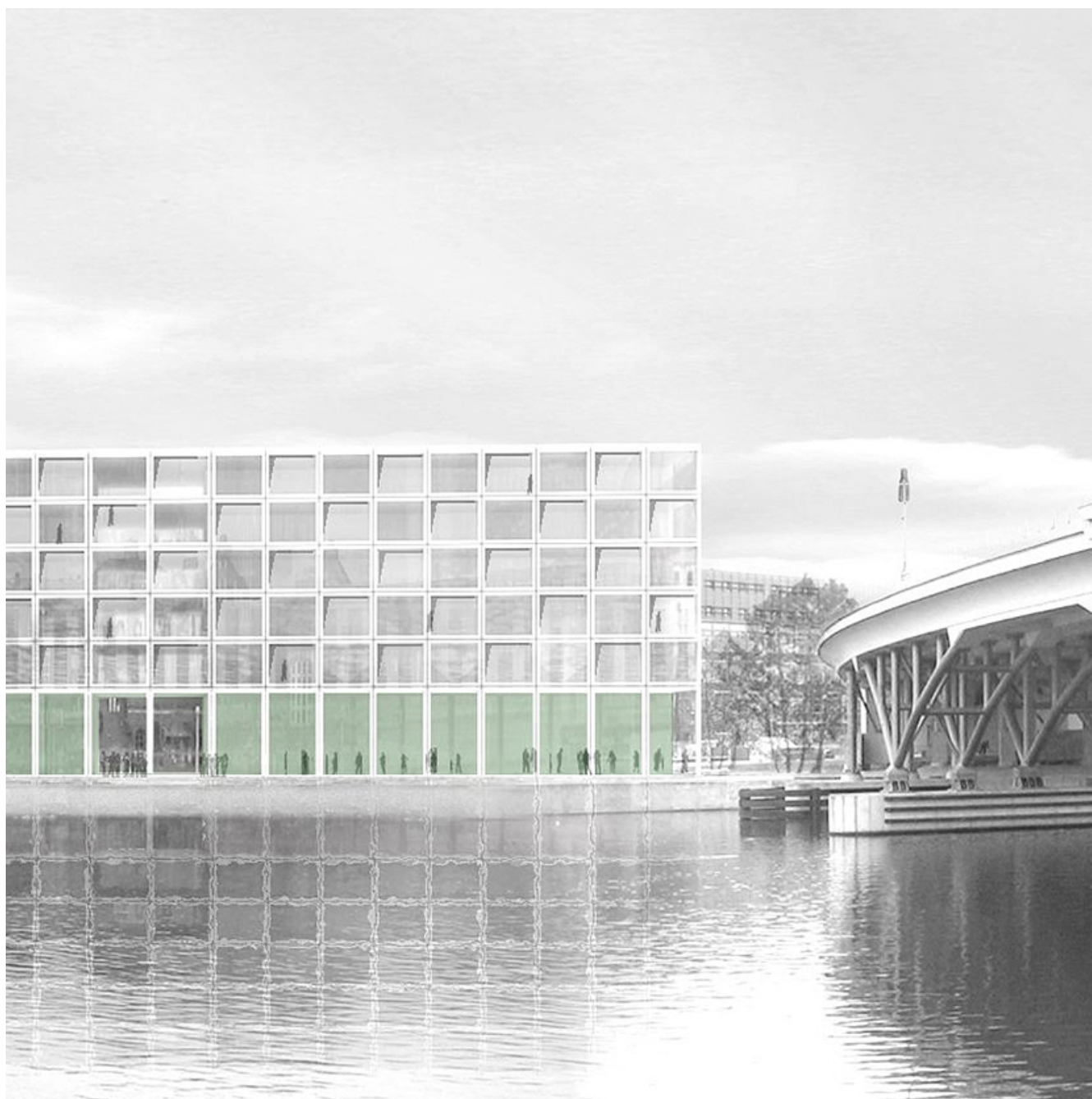


Evaluation of new office location for EBP in Berlin Mitte



Client

Familie Ernst Basler AG

Facts

Period 2009

Project Country Germany

EBP carried out an evaluation of a piece of property in Berlin Mitte to establish a basis for making a decision on whether to purchase the property. The results of the evaluation, which centred on building-use options and the risks and opportunities associated with the location, were outlined in a report.

EBP is looking to relocate its offices from Potsdam to Berlin. The plan is to find a site for a new building that sets new standards in terms of sustainable development and appropriately reflects the philosophy of the enterprise. The focus of interest is a piece of property in Berlin Mitte. An evaluation of the site and possible building-design and space utilisation options was carried out to establish a basis for making a decision on whether to purchase the property. Possible technical and economic risks were also evaluated.

The following factors were examined and compiled in a site-evaluation report:

- Legal considerations relating to purchase and development
- Space-utilisation options and forms of office organisation
- Design options
- Geology, possible site contamination, noise exposure
- Design and technical implementation
- Cost effectiveness
- Project organisation and execution

Picture Credits: e2a Architekten

Contact Persons



Eliane Kobe

eliane.kobe-grunder@ebp.ch